

WELLD[®]

WELLD[®]



FDC6000

FULL DIGITAL COLOR DOPPLER DIAGNOSTIC SYSTEM

CE₀₄₃₄ RoHS



Importado por: Ribas Medicina,S.L. www.ribasmedicina.com

Shenzhen Well.D Medical Electronics Co., Ltd.

Address: Well.D Park Qinglan 3 Rd., National Biopharmaceutical Industrial Base,

Pingshan New Area, Shenzhen, China, 518118

Telephone: +86-755-36900018/26073350

FAX: +86-755-36900018/26073350

E-mail: export@welld.com.cn

Website: www.welld.com.cn www.welld.net



www.welld.com.cn

FDC6000

FDC6000 characters world-advanced technology, modern ergonomic design, stellar image quality, high blood sensitivity and extensive probe adaptation capability, it can meet varies needs of clinical diagnosis of abdomen, obstetrics, gynecology, cardiology, small organs, superficial blood vessels, musculoskeletal, ophthalmology, anesthesiology, urology, neurosurgery and other specialist clinics



Leading Ultrasound Imaging Technology

1. World-advanced ultrasound platform and architecture

An 8-core DSP processor and a front-end ultrasound chip with the latest generation of "digital demodulator" is adopted, providing powerful computing capability, high integration, low power consumption as well as seamless upgrade which supports elastography.

3. Pulse inversion harmonic imaging technology

Superior to traditional tissue harmonic imaging technology, pulse inversion harmonic imaging technology is applied to suppress side lobes and improve contrast resolution of the tissue with counteracted fundamental and enhanced harmonic.

5. A continuous transmit focus at every pixel

The distance differences of transmitting sound waves and those of receiving sound waves are calculated simultaneously, resulting to higher imaging precision and accuracy. Diagnostic differences caused by differentiation of operators are lessened with no focus displayed and no need of manual adjustments.

2. Sparse transmit & multi-beam parallel processing technology

Plane-wave transmitting as well as 16-beam parallel receiving and processing improve the frame rate of image and blood sensitivity in B + C and B + C + D modes, achieving triplex display.

4. Synthetic aperture beam-forming technology

Break of restrictions traditional DAS beam-forming algorithm has on the number of physical channels generates excellent images both in near field and in far field with smaller hardware and lower transmit power.

6. Speckle noise suppression technology

Removal of speckle noise significantly clears and smooths the 2D image.

Ergonomic Design



Ergonomically designed controlpanel , digital background light control and spin buttons for flexible operation.



All function buttons PC keyboard



Two probe connectors, free probe switching, hot-swapping available



DICOM3.0, remote network assistance available



Rich data transmission interface



With multiple built-in inspection types, edit and create inspection types , automatically optimizes the parameters through one key depending on the type of inspection

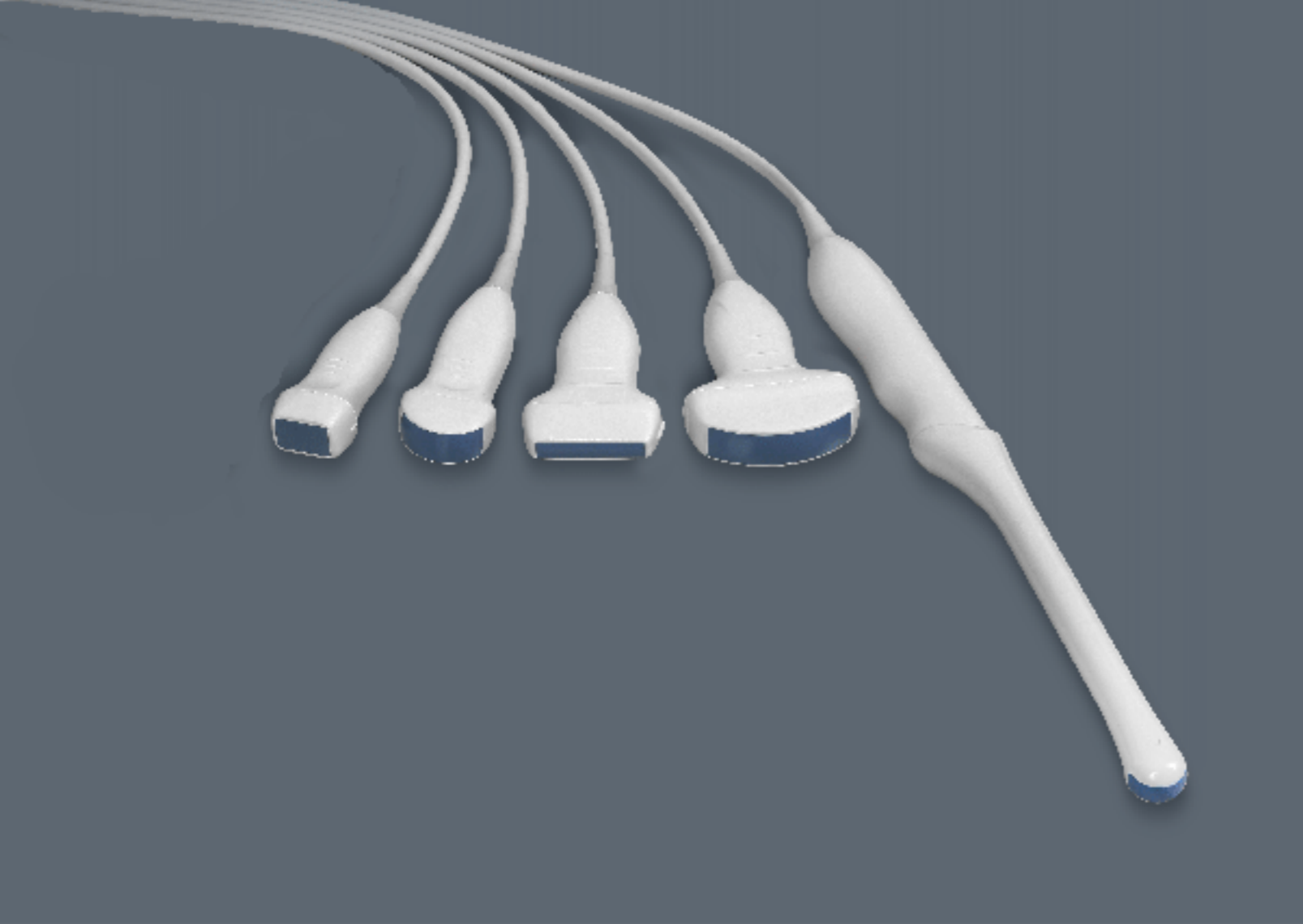


Multiple choices of language display



Graphic workstations, import from and export to typical cases generating quick diagnosis

DSP



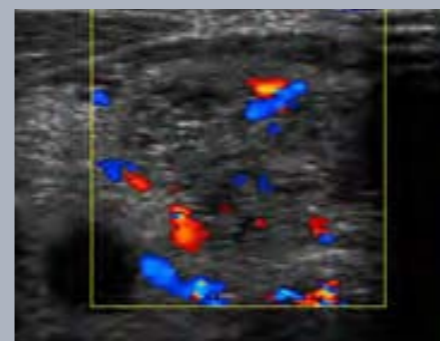
3D Image - Twins



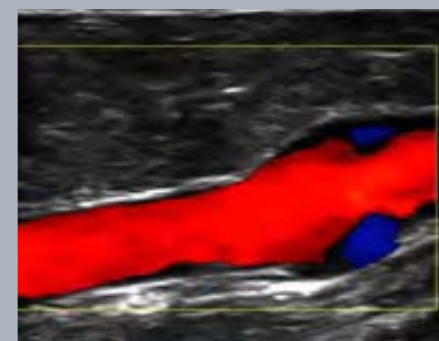
Vagina In Color Doppler Mode



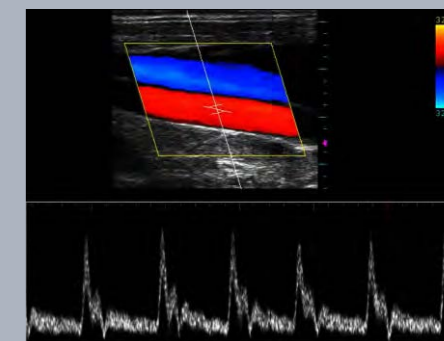
2D Image - Twins



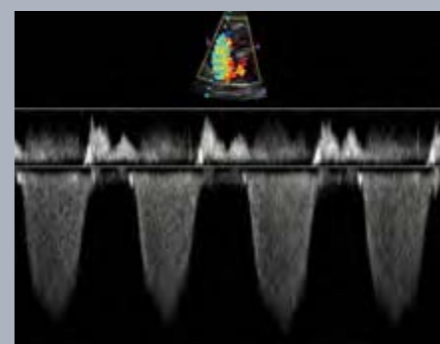
Thyroid In Color Doppler Mode



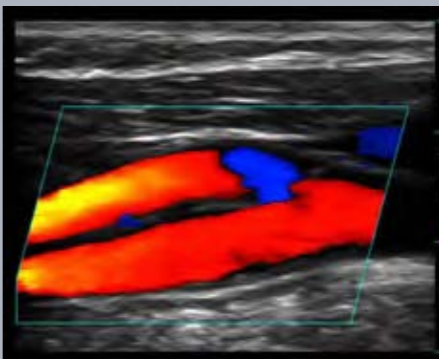
Vein Expansion And Reflux



Real-time Triplex Display



Reflux In Spectral Doppler



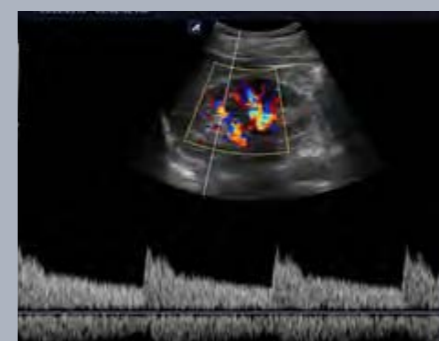
Common Carotid Artery Biurcate In Color Doppler Mode



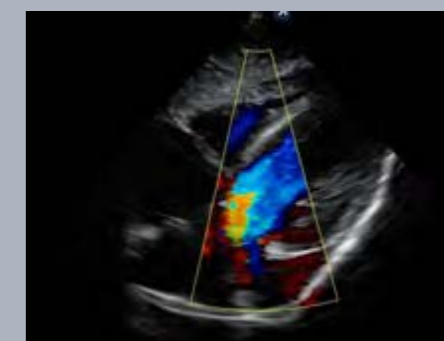
Cardiology In Color Doppler Mode



Abdomen In Color Doppler Mode



Real-time Triplex Display



Cardiology In Color Doppler Mode

Broadband Frequency Probes

- High-density and wide-band probe group
- All probes supporting harmonic imaging mode
- Free-hand 3D Software Available



DSP